



# PRO GRIP<sup>TM</sup>

IT NEVER LETS GO

## TILE ON TILE ADHESIVE TECHNICAL DATA SHEET

### PURPOSE

**PRO GRIP TILE ON TILE ADHESIVE®** is a highly modified cement-based tile adhesive with superior adhesion properties. The product has been designed for installing all types of tiles onto nonporous surfaces like power floated floors and previous installed tiles.

### RECOMMENDED FOR

Installing all types of tiles ( $\leq 600\text{mm} \times 600\text{mm}$  in size) to non-porous substrates. This product is also suitable for high-stress applications – suspended slabs and exterior applications exposed to full sunlight and rain.

### BENEFITS & FEATURES

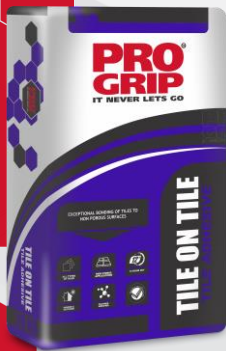
- a) High polymer content
- b) Improved adhesion properties
- c) Improved workability and ease of use
- d) Flexible

 **SUSTAINABLE DEVELOPMENT GOALS**



ASK ABOUT OUR  
PROGRIP

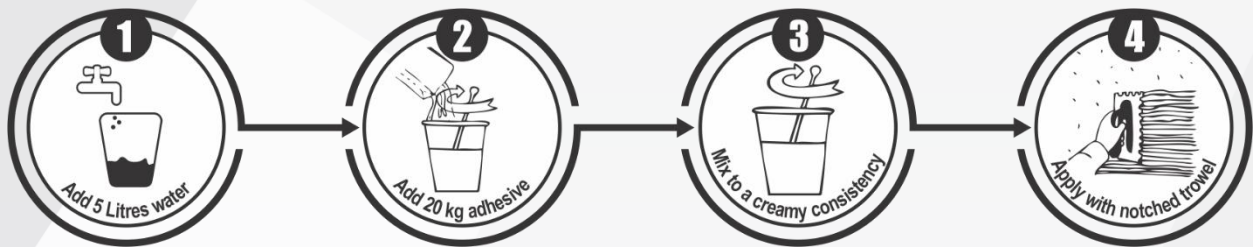




## TILE ON TILE ADHESIVE TECHNICAL DATA SHEET

**PRO  
GRIP**<sup>®</sup>  
IT NEVER LETS GO

### MIXING INSTRUCTIONS



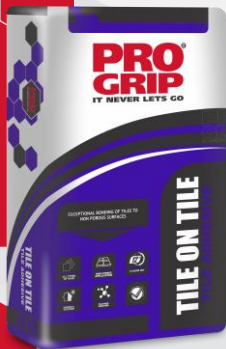
- Wear appropriate safety gear before mixing (see MSDS for details).
- Add 5 Lt of room temperature potable water into a clean container
- Slowly add the adhesive while mixing. The use of an electric drill & paddle at low speed is recommended.
- Continue mixing until a smooth lump free consistency is achieved.
- Let the mixture stand for 2 mins to ensure the chemical additives are fully dissolved. Remix for 30 sec before using.
- Remix if the mixture becomes heavy or stiff. Do not add extra water. Use within 3 hours.

### SURFACE PREPARATION

Please ensure the installation is performed in strict accordance with SANS 10107:2011, The design and installation of ceramic tiling.

- All surfaces to be tiled should be dry, level, clean and free of dust.
- Surface contaminates (release agents or laitance) should be removed with a mild acid wash followed by neutralizing and rinse wash. **Pro Care Grout Remover** and **Pro Care Heavy Duty Cleaner** are recommended. Organic fouling (fungi, algae) may be removed by washing with a strong bleach solution or **Pro Care Mould Remover**.
- Newly constructed surfaces must be fully cured and settled. Wait the following periods before tiling.

\*This guideline only serves as a basic manual for the surface preparation, product selection and installation procedure for this type of application. Each installation needs to be assessed on merits and the products used and the procedures followed should be in accordance with the SABS code for the design and installation of ceramic tiles (SABS 10107:2011).



## TILE ON TILE ADHESIVE TECHNICAL DATA SHEET

**PRO  
GRIP**<sup>®</sup>  
IT NEVER LETS GO

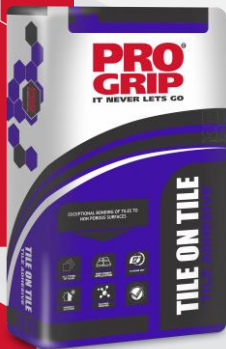
New concrete or brick surfaces	6 weeks
Newly plastered wall	2 weeks
Newly screeded floors:	4 weeks

- d. Surfaces coated with paints, sealants, gypsum plaster or glues should be chipped to expose 80% of the substrate and primed before tiling
- e. Highly porous surfaces can negatively affect the bond strength of the adhesive. Check porosity by applying a small quantity of water to the surface. If it is rapidly absorbed in less than a minute, then the surface should be primed before tiling.
- f. Very smooth dense surfaces (i.e. power-floated floors, off shutter concrete etc.) can be difficult to bond to. Prime the surface to ensure a strong durable bond.
- g. Surfaces should be primed by applying a thick continuous coat (1 – 2 mm) of either **Pro Grip Basecoat Slurry** or a mixture of 2 parts **Pro Grip Basecoat** to 1 part **Pro Grip Keycoat**. The primer coat should be allowed to dry before tiling.

## PRODUCT APPLICATION

- a. Apply a thin 1 – 2 mm coat of adhesive with a flat side of the trowel. Press firmly to key the adhesive to the substrate.
- b. Apply additional mortar with the notched side of the trowel, combing in one direction. Ensure a minimum adhesive bed height of 6 – 7 mm for floor tiling and 3 – 4 mm for wall tiling.
- c. Only apply adhesive to an area that can be tiled within 10 min.
- d. Bed the tiles firmly into the adhesive bed to ensure maximum contact between the adhesive and tile. Remove excess adhesive from the joints.
- e. Choose the correct sized notched trowel - see below:

\*This guideline only serves as a basic manual for the surface preparation, product selection and installation procedure for this type of application. Each installation needs to be assessed on merits and the products used and the procedures followed should be in accordance with the SABS code for the design and installation of ceramic tiles (SABS 10107:2011).



## TILE ON TILE ADHESIVE TECHNICAL DATA SHEET

**PRO  
GRIP**<sup>®</sup>  
IT NEVER LETS GO

Application	Trowel Size (height x width x gap)
Wall tiles	6mm x 8mm x 5mm
Floor tiles smaller than 400mm x 400mm	10mm x 10mm x 6mm
Floor tiles larger than 400mm x 400mm	17mm x 22mm x 6mm

## GROUTING RECOMMENDATIONS

- Do not butt joint tiles. maintain a minimum joint width of 2mm for wall tiling or 3mm for floor tiling.
- The tiling joints should be completely free of adhesive before grouting.
- Wait a minimum of 18 hr after installing the tiles to ensure the adhesive achieves its initial set.
- Pro Grip Water Repellent Grout** is recommended for all tiling applications. Replace mixing water with **Pro Grip Bonding Liquid** for high stress applications or for additional waterproofing.

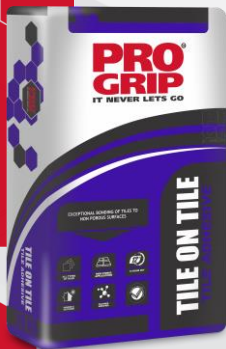


## EXPANSION JOINTS

- Perimeter expansion joints should be installed on all tiled surfaces – walls and floors.
- Perimeter expansion joints should also be installed around any columns, staircases, windows, and any other projecting components.
- These joints should be left empty and covered with skirting boards or if exposed, filled with a bond breaker and flexible Polyurethane sealant like **Pro Grip Expansion Joint Sealant**.
- Intermediate expansion joints should be installed when the tiling span is longer than 5m on surface bed applications or 3m on suspended surfaces. Intermediate expansion joints should be installed over any structural expansion joints in the substrate. Fill with a bond breaker and a suitable Polyurethane sealant like **Pro Grip Expansion Joint Sealant**.



\*This guideline only serves as a basic manual for the surface preparation, product selection and installation procedure for this type of application. Each installation needs to be assessed on merits and the products used and the procedures followed should be in accordance with the SABS code for the design and installation of ceramic tiles (SABS 10107:2011).



# TILE ON TILE ADHESIVE

## TECHNICAL DATA SHEET



- e. Movement joints must be incorporated at more frequent positions, should the application be subject to significant thermal or vibration movement.

## PRECAUTIONS & LIMITATIONS

- a. Install in moderate ambient conditions i.e. at temperatures between 10°C and 30°C and protect from excessive wind.
- b. Adhere to good health and safety practises – wear rubber gloves and goggles to protect hands and eyes.
- c. Keep adhesive away from children and pets. Do not ingest.
- d. Do not wash excess material into drains. Allow to harden and dispose with solid waste.



## TECHNICAL DATA

(@ 25°C & 50% Humidity) Cold temperatures or non-porous substrates or tiles may extend the open and setting times.

<b>Initial Setting Time</b>		± 6 hours
<b>Final Setting Time</b>		± 24 hours
<b>Open Time</b>		± 20 minutes
<b>Pot Life</b>		± 2 hours
<b>Shelf Life</b>		9 months if store in dry conditions
<b>Coverage per 20 Kg bag</b>		± 2.2 m <sup>2</sup> when using a 22 mm trowel
		± 3.8 m <sup>2</sup> when using a 10 mm trowel
		± 6 m <sup>2</sup> when using a 6 mm trowel

\*This guideline only serves as a basic manual for the surface preparation, product selection and installation procedure for this type of application. Each installation needs to be assessed on merits and the products used and the procedures followed should be in accordance with the SABS code for the design and installation of ceramic tiles (SABS 10107:2011).