

NEW MATRIX BY GRYPHON

BOTH ON-TREND AND ECO-CHIC.

The new Matrix tile range is a beautiful example of Gryphon's sustainable design. It is an 800 x 800, 8mm thick screed-style porcelain tile with an eye-catching Terrazzo design. Matrix offers a delightful star-studded surface with light, mid-tone and dark grey contrasts 'splashed' onto a screed-look background. It is a lively and unusual Terazzo design which will bring a layer of variances and dynamic movement to any contemporary space.



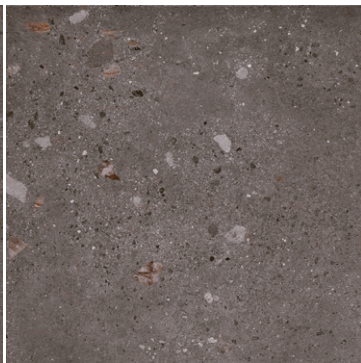
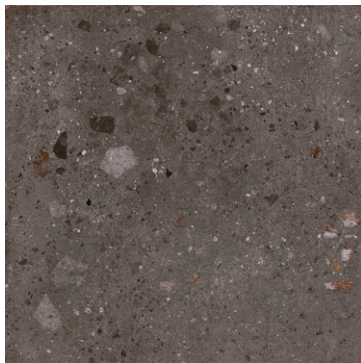
ITALTILE

COMMERCIAL

Contact Us:

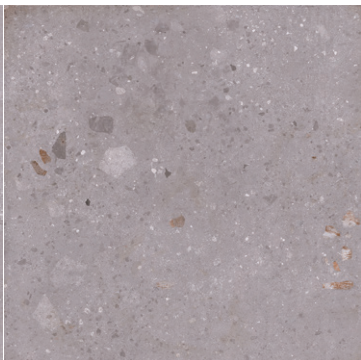
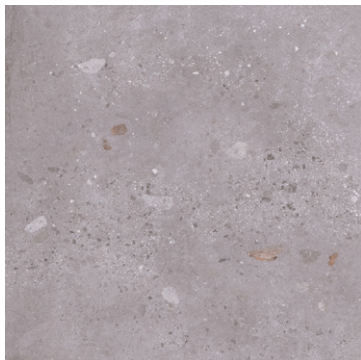
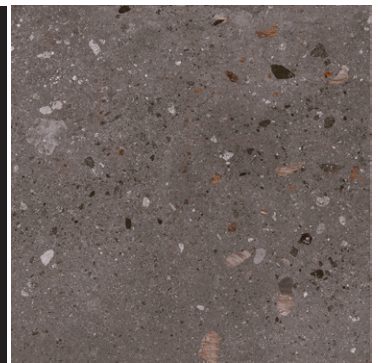
GAUTENG - commercialgauteng@italtile.co.za **KZN** - commercialkzn@italtile.co.za

WESTERN CAPE - commercialcape@italtile.co.za **NELSPRUIT** - commercialnelmpu@italtile.co.za



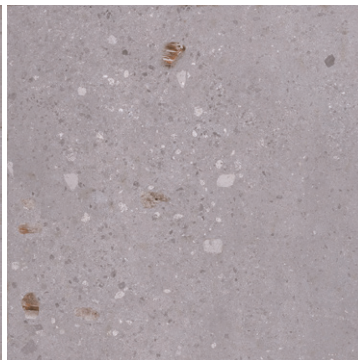
MATRIX
CHARCOAL

800x800mm



MATRIX
GREY

800x800mm



MATRIX SPECIFICATIONS

Origin
South Africa

Supplier
GRYPHON

Size
800x800x8

Finish
**Matt finish, porcelain tile
with cushioned edge**

Faces
8

Origin
South Africa

Guarantee
10 Years

Feature
Ecotec technology

Terrazzo has been a desirable look since its invention during the Venetian Renaissance. In 2023, it's an aesthetic that offers ever more imaginative dappling, with bolder splashes, wildly contrasting fragments and XXL speckles.



With new **EcoTec**, Light means strong.

LIGHT: EcoTec reduces the amount of clay required for tile bodies.

STRONG: EcoTec tile bodies are 25% to 55% stronger than SABS SANS1449 MOR standards.

GREEN: Less energy is required for firing. Less water per m² utilised throughout the entire process. Tiles are lighter to transport, thus helping to reduce fuel costs and carbon footprint.



Italtile is extremely proud of its longstanding relationship with South African tile manufacturers Gryphon, masters of sustainability and the pioneers of EcoTec. The EcoTec process creates tiles that are lighter (less clay is used in the tile body) and stronger (24% to 55% stronger than the required SABS standards). Less energy is used in the firing process. The lighter tiles are easier on the transport vehicles which use less fuel because of less weight; and less water is used in the entire manufacturing process.



Uses Less
Energy



Lighter
To Transport



Uses Less
Water



Reduce Carbon
Footprint

From the quarry to your home, EcoTec provides benefits throughout the value chain.



ITALTILE

COMMERCIAL

Contact Us:

GAUTENG - commercialgauteng@italtile.co.za **KZN** - commercialkzn@italtile.co.za

WESTERN CAPE - commercialcape@italtile.co.za **NELSPRUIT** - commercialnelmpu@italtile.co.za