

FRANKE Collection

Kitchen Sinks & Accessories



ITALTILE
COMMERCIAL

Franke's new Tectonite Range of Sinks

One demands a lot from their kitchen, and the kitchen demands a lot from the sink. That's why strength and durability are just as essential as outstanding beauty. Tectonite combines these elements beautifully to create sinks offering a granite like appearance with design freedom and peace of mind. Exclusive to Franke, Tectonite represents a huge advance in synthetic material.



GERM RESISTANT

Coated surface ensures that Tectonite sinks are protected against stubborn stains and bacteria.



SCRATCH RESISTANT

Knives and forks won't scratch the surface.



IMPACT RESISTANT

Light-weight (it's much more resistant to impacts and blows than comparable materials)



FADE RESISTANT

Thanks to its UV protection, Tectonite does not fade.

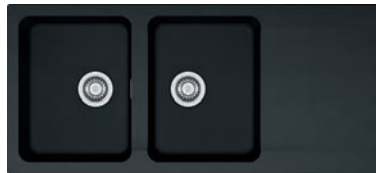


HEAT RESISTANT

Heat-resistant up to 300°C for up to 10 seconds. .

INSET SINKS

The Sirius range of inset sinks is the newest addition to the Franke range. Manufactured from Tectonite in Carbon Black, this sink is an essential for any modern kitchen.



ORION OID621
Carbon Black
Sink Dimensions:
1160L x 510W mm
Bowl Dimensions:
340L x 440W x 190D mm
Product Code: 1990113



SIRIUS 1.0 SID610
Carbon Black
Sink Dimensions:
560L x 530W mm
Bowl Dimensions:
490L x 370W x 200D mm
Product Code: 1990111



SIRIUS SINGLE 1
PREP BOWL
Carbon Black
Sink Dimensions:
500Ø mm
Bowl Dimensions:
400L x 190D mm
Product Code: 1990114

INSET/UNDERMOUNT SINK

The Sirius 2.0 S2D620 is the newest addition to the Franke inset/undermount range. Manufactured from Tectonite in Carbon Black, this sink is an essential for any modern kitchen.



SIRIUS 2.0 S2D620
Carbon Black
Sink Dimensions:
860L x 500W mm
Bowl Dimensions:
350L x 400W x 200D mm
Product Code: 1990112



UNDERMOUNT SINK

The Sirius 1.0 SID110-34 is the newest addition to the Franke undermount range. Manufactured from Tectonite in Carbon Black, this sink is an essential for any modern kitchen.



SIRIUS 1.0 SID110-34
Carbon Black
Sink Dimensions:
365L x 440W mm
Bowl Dimensions:
340L x 410W x 200D mm
Product Code: 1990110

Fragranite Sinks treated with Sanitized®



The new range of Fraganite sinks tackles the humble cleaning problem associated with composite sinks. The revolutionary new Fraganite + technology is now available on all Franke Fraganite and Silksheen Fraganite sinks, which now enjoy ultra-smooth surfaces that are exceptionally easy to clean.

Fragranite is an exceptionally tough material which is highly resistant to burns, chips and stains. It was pioneered by Franke and contains 80% granite to form a unique material with a subtle sheen that is warm to the touch.

Kitchens can be a critical location for spreading bacteria and demand special attention to hygiene. On unprotected material, bacteria can multiply every 20 minutes making surfaces unhygienic. The integrated Sanitized® hygiene function in Fraganite sinks helps to keep this area clean and provides the sink with lasting protection. It does not replace normal cleaning but helps to keep surfaces free from bacteria. Tests have proven that Fraganite treated with Sanitized® reduces bacteria and microbe growth by 99%.



GERM RESISTANT

Fragranite treated with Sanitized® reduces bacteria and microbe growth by 99% giving the sink lasting protection.



SCRATCH RESISTANT

Knives and forks won't scratch the surface.



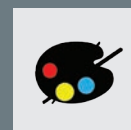
IMPACT RESISTANT

Fragranite is resistant to impact and thermal shock.



STAIN RESISTANT

The surface colour will not stain or mark and thanks to the silky smooth SilkSheen it is very easy to clean.



COLOUR RESISTANT

The surface colour will not fade throughout the lifetime of the product.



HEAT RESISTANT

Fragranite surfaces will not be affected by heat up to 280 °C.

INSET PREP BOWLS

Our range of Ronda prep bowls in revolutionary Fraganite material includes a tap landing and is designed for inset installation.

The surface is exceptionally tough and treated with Sanitized® to reduce bacteria and microbe growth by 99%. This round bowl is the perfect solution for tight design spaces. Manufactured in Slovakia, the ROG610-41 is available in Black, Stone Grey and Polar White.



**RONDA ROG610-41
BLACK**
Sink Dimensions:
5100 mm
Bowl Dimensions:
4000 mm x 195D
Product Code: 1990080



**RONDA ROG610-41
STONE GREY**
Sink Dimensions:
5100 mm
Bowl Dimensions:
4000 mm x 195D
Product Code: 1990082



**RONDA ROG610-41
POLAR WHITE**
Sink Dimensions:
5100 mm
Bowl Dimensions:
4000 mm x 195D
Product Code: 1990081

INSET/UNDERMOUNT SINKS

The Maris MRG is an addition to the Franke undermount range. Manufactured from Fraganite in Matt Black, Stone Grey and Polar White this sink is the perfect fit for any contemporary kitchen design.



**MARIS MRG 610-37
MATT BLACK**
Sink Dimensions:
410L x 440W mm
Bowl Dimensions:
370L x 400W x 200D mm
Product Code: 1990115



**MARIS MRG 610-37
STONE GREY**
Sink Dimensions:
410L x 440W mm
Bowl Dimensions:
370L x 400W x 200D mm
Product Code: 1990123



**MARIS MRG 610-37
POLAR WHITE**
Sink Dimensions:
410L x 440W mm
Bowl Dimensions:
370L x 400W x 200D mm
Product Code: 1990119



**MARIS MRG 610-52
MATT BLACK**
Sink Dimensions:
560L x 440W
Bowl Dimensions:
520L x 400W x 200D mm
Product Code: 1990116



**MARIS MRG 610-72
MATT BLACK**
Sink Dimensions:
760L x 440W mm
Bowl Dimensions:
720L x 400W x 200D mm
Product Code: 1190117



**MARIS MRG 610-52
STONE GREY**
Sink Dimensions:
560L x 440W
Bowl Dimensions:
520L x 400W x 200D mm
Product Code: 1990124



**MARIS MRG 610-72
STONE GREY**
Sink Dimensions:
760L x 440W mm
Bowl Dimensions:
720L x 400W x 200D mm
Product Code: 1190125



**MARIS MRG 610-52
POLAR WHITE**
Sink Dimensions:
560L x 440W
Bowl Dimensions:
520L x 400W x 200D mm
Product Code: 1990120



**MARIS MRG 610-72
POLAR WHITE**
Sink Dimensions:
760L x 440W mm
Bowl Dimensions:
720L x 400W x 200D mm
Product Code: 1190121

INSET/UNDERMOUNT SINKS

The Maris MRG is an addition to the Franke undermount range. Manufactured from Fraganite in Matt Black, Stone Grey and Polar White this sink is the perfect fit for any contemporary kitchen design.



**MARIS MRG 620-35-35
MATT BLACK**
Sink Dimensions:
760L x 440W mm
Bowl Dimensions:
348/346L x 400W x 200D mm
Product Code: 1990118



**MARIS MRG 620-35-35
STONE GREY**
Sink Dimensions:
760L x 440W mm
Bowl Dimensions:
348/346L x 400W x 200D mm
Product Code: 1990126



**MARIS MRG 620-35-35
POLAR WHITE**
Sink Dimensions:
760L x 440W mm
Bowl Dimensions:
348/346L x 400W x 200D mm
Product Code: 1990122



CLEANING INSTRUCTIONS FOR FRAGRANITE RANGE OF SINKS

CLEANING PROCEDURE

Normal Everyday Cleaning

1. When you are finished using your sink, wipe the sink using a sponge (available in most supermarkets) and water and dry off with a soft cloth, or
2. Clean the sink using a normal detergent and soft cloth, rinse with water and dry with a soft cloth.

FOR MORE STUBBORN STAINS

1. Follow steps 1 or 2 above to remove any film on the surface of the sink
2. Apply a cream cleaner and clean the sink using a scourer sponge (cleaning in circular motions). When using the scourer sponge use considerable force (rubbing hard on the surface of then sink). Work on this for a few minutes (sometimes it can take longer to remove really stubborn stains). On completion rinse the sink with water and dry with a soft cloth. (Do not use a steel wool in place of a scourer sponge as minute particles of the steel wool may become embedded in the surface of the sink).

IF THE STAIN IS STILL VISIBLE AFTER THE ABOVE

1. Apply a limescale remover per manufacturer's instructions and clean the sink using a scourer sponge (cleaning in circular motions). When using the scourer sponge use considerable force (rubbing hard on the surface of then sink). Sometimes it takes more than one application to remove really stubborn stains.

On completion rinse the sink with water and dry with a soft cloth. (This is what we recommend for hard water areas where limescale forms on the surface of the sink, but it may be used for other types of stubborn staining).

The products mentioned above are also the standard products we would recommend for cleaning granite composite sinks on an ongoing basis.

SUGGESTION TO PREVENT LIMESCALE STAINING RETURNING AFTER CLEANING

Whilst this is not something we have tried in house there are suggestions from various users on the internet to clean the sink thoroughly with washing up liquid or a cream cleaner, rinse well dry off with a cloth. Apply a little baby oil to a clean dry cloth and rub over the sink surface. Initially this was repeated for a few days, thereafter every couple of months. It is important to wipe the sink down after use to prevent a further build up of stains.

ALTERNATIVE SOLUTIONS TO REMOVING STAINS THAT HAVE BEEN USED IN THE PAST.

- a) Dilute a dishwasher tablet in a bowl of very hot water, 3/4 fill the sink bowl with very hot water, add the dishwasher solution to the sink and leave for a few hours.
- b)
 1. Fill both bowls with a solution of warm water diluted with bleach (A cup full of bleach in around 10 litres of water). DO NOT ALLOW RAW BLEACH TO COME IN CONTACT WITH THE SINK. This should be left for a few hours, tannins will generally bleach out.
 2. Following this the entire sink surface needs to be scoured vigorously with a scotchbrite pad and cream cleaner, this will not be a quick fix and may need to be carried out a few times to remove the surface deposits.
 3. Do not use raw bleach (either to clean the sink or let it soak in the sink).

ADDITIONAL INFORMATION

Strong alkalis like ammonia and caustic soda, caustic paint strippers, paint brush cleaners and neat chemical descaling agents should be kept away from your sink, as prolonged exposure to them may dull the surface.

Plastic washing up basins should not be used with the sink as small particles of the plastic basin may wear and become embedded into the surface of the sink causing a discolouration effect. Your sink can withstand high temperatures for a short period of time without marking. However, it is better to avoid putting very hot pans directly onto the sink for prolonged periods as the pans may leave a mark on the surface of the sink.

Why Purchase a Franke Sink:

- Leading manufacturer of Stainless Steel sinks worldwide - with over 100 Years of experience
- Elegance, quality, versatility and functionality...our winning formula for world class design
- Precision Swiss Engineering, Austenitic Stainless Steel, ensuring the finest quality & durability
- Practical and innovative accessories are available for certain ranges

UNDERMOUNTS

Bringing Swiss-made precision into your kitchen is the New Maris Sink Range in matt brushed stainless steel. A range of 5 undermount sinks enables multiple combinations for perfect functionality and a harmonious look.



MARIS MRX110-19
Sink Dimensions:
230L x 440W mm
Bowl Dimensions:
190L x 400W x 130D mm
Product Code: 1990092



MARIS MRX110-34
Sink Dimensions:
380L x 440W mm
Bowl Dimensions:
340L x 400W x 180D mm
Product Code: 1990094



MARIS MRX110-45
Sink Dimensions:
490L x 440W mm
Bowl Dimensions:
450L x 400W x 180D mm
Product Code: 1990091



MARIS MRX110-55
Sink Dimensions:
590L x 440W mm
Bowl Dimensions:
550L x 400W x 180D mm
Product Code: 1990090



MARIS MRX110-70
Sink Dimensions:
740L x 440W mm
Bowl Dimensions:
700L x 400W x 180D mm
Product Code: 1990093

The satin finish stainless steel Selene sink is manufactured locally in by Franke South Africa. This undermount single bowl sink allows the natural beauty of your counter to be uninterrupted by the edges of your sink as well as increasing the counter space in your kitchen.



SELENE SLX110-40
Sink Dimensions:
428L x 428W mm
Bowl Dimension:
400L x 400W x 190D mm
Product Code: 1990095

The stylish Harmony AMX120 undermount sink from Franke Italy features wide, deep bowls catering for all types of kitchens and tastes.



HARMONY AMX120
Sink Dimensions:
765L x 450W mm
Bowl Dimensions:
340L x 400 x 180D mm
Product Code: 1990098

INSET SINKS

Franke inset sinks - a unique design concept, combining style, sophistication and innovative functionality. With dedicated accessories simplifying food preparation in the kitchen.

The Grace AMX621 is an Italian made seamless double kitchen sink with the soft modern design with slim edging.

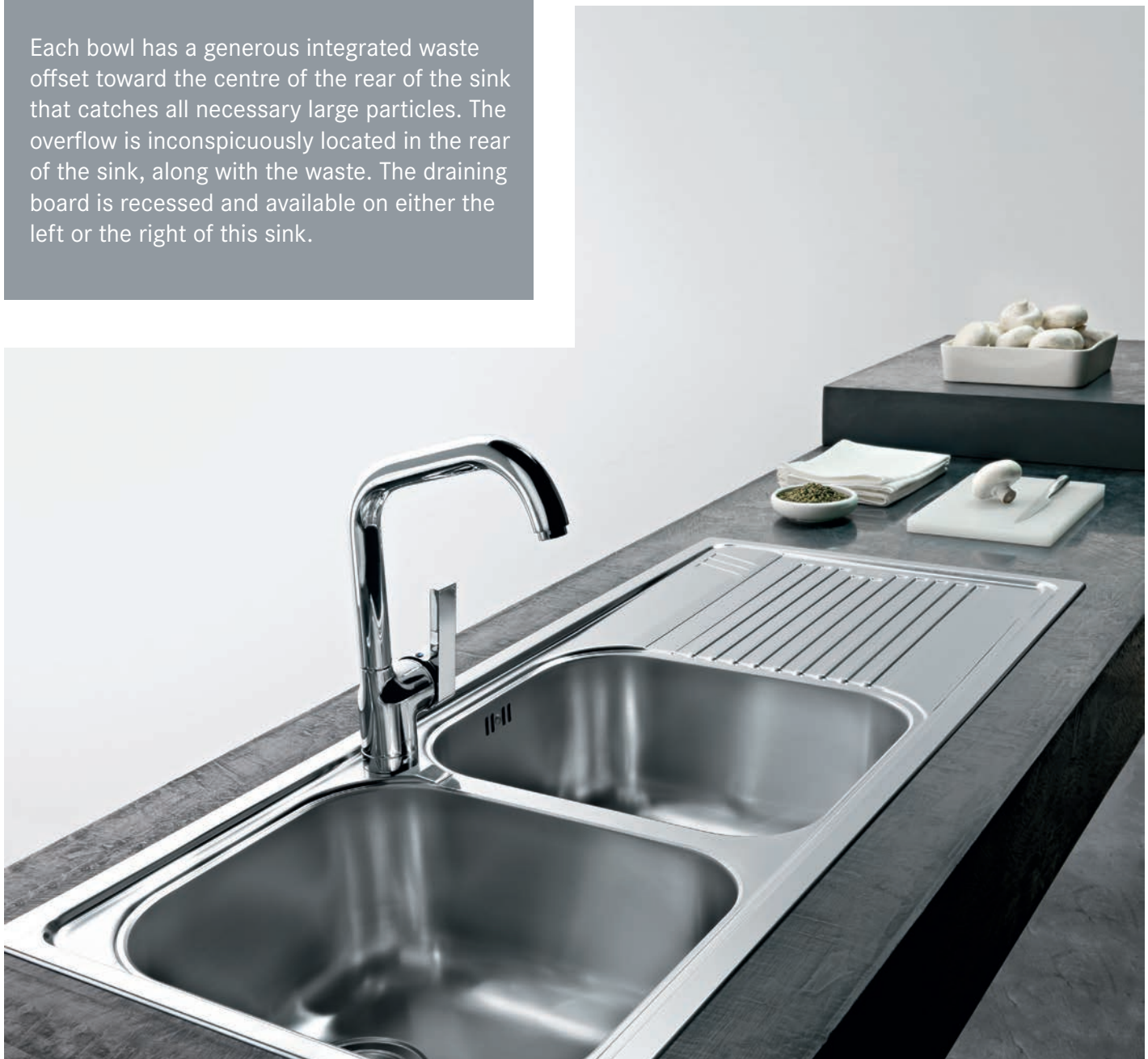
This inset sink features extremely generous bowls, which are deeper than the normal bowl. The high-quality stainless steel is finely brushed to create the smoothest matt finish.

The deep inset lip is designed by the Swiss experts for minimal spilling and splashing.

Each bowl has a generous integrated waste offset toward the centre of the rear of the sink that catches all necessary large particles. The overflow is inconspicuously located in the rear of the sink, along with the waste. The draining board is recessed and available on either the left or the right of this sink.



GRACE AMX621
Sink Dimensions:
1160L x 500W
Bowl Dimensions:
340L x 400W x 175D mm
340L x 400W x 175D mm
Product Code:
LHD 1990079
RHD 1990078



INSET SINKS

The Cascade range follows the European trend of square designs. Cascade is manufactured in South Africa using monoblock technology to minimise welding, and in doing so ensures that quality and performance is of the highest standards.



CASCADE CDX671
Sink Dimensions:
1360L x 500W
Bowl Dimensions:
343L x 410W x 157D
160L x 280W x 139D mm
Product Code: 1990019



CASCADE CDX621-120
Sink Dimensions:
1200L x 500W
Bowl Dimensions:
343L x 410W x 157D
Product Code: 1990027

Quinline inset sinks are produced in South Africa, using monoblock one-piece pressed technology. All the edges are folded for extra strength on the corners. Austenitic stainless steel ensures that the product performs well in high corrosion coastal areas.



QUILINE QLX622
Sink Dimensions:
1500L x 500W mm
Bowl Dimensions:
343L x 410W x 153D mm
Product Code: 1990008



QUILINE QLX670
Sink Dimensions:
970L x 500W mm
Bowl Dimensions:
343L x 410W x 157D mm
160L x 280W x 139D mm
Product Code: 1990004



PREP BOWLS

Installing a Franke Prep Bowl evolves the kitchen into a co-ordinated and efficient workplace within the home.



RONDO RDX610-48
with Tap Landing
Sink Dimensions:
4850 mm
Bowl Dimensions:
3800 x 161D mm
Product Code: 1990010



RONDO RDX610-45
Sink Dimensions:
4500 mm
Bowl Dimensions:
3800 x 161D mm
Product Code: 1990012

WASTE MANAGEMENT

Spazi Plumbing Kits: Space saving plumbing kits which facilitate outlet connections for washing machines and dishwashers. Fully adjustable to suit bowl heights and positions.

Waste Disposer: Durable & Energy efficient, minimises waste & odours. The hygienic & effective disposal of waste in the home. Fruit & vegetable peels, rice, soft chicken bones and egg shells may be effortlessly ground with water and flushed through the pipe-work system using the Stainless Steel grinding chamber.



Spazi F/1: Single Bowl
Product Codes:
1120008



Spazi F/2: Double Bowl
Product Codes:
1120009



Spazi Conversion & Spares Kit
Product Codes:
1120094



WASTE DISPOSER
Turbo Plus TP-75
0.75Hp with Air Switch
Product Codes:
1340005

CLEANING INSTRUCTIONS FOR STAINLESS STEEL RANGE OF SINKS

CLEANING PROCEDURE

Clean the Stainless Steel as often as experience dictates (i.e. when noticeably dull or dirty) and use the simplest cleaning procedure that will effectively “do the job”.

- Stainless Steel reacts best to clean water or mild detergent solution, applied with a soft cloth or sponge, rinsed well and wiped dry.
- Routine, simple, gentle and inexpensive cleaning will retain both the corrosion resistance and appearance of Stainless Steel through years of exposure and use. Occasionally a small amount of Inox Creme may be used on a soft, damp cloth with the detergent solution to remove stubborn dirt or slight incipient stains. Rub gently.

STORAGE OF PRODUCTS

Product research has proven that certain household products which may be stored underneath a sink, can lead to damage of

the sink’s base. Chlorine is the major culprit and can be found in: chlorine for swimming pools; household bleach; bathroom cleaning products such as toilet cleaners, mildew treatments and tile cleaners; kitchen cleaning products – especially liquid cleaners; powders for dishwashers and laundry detergents. Preserve the life and beauty of your sink by storing these products away from the sink area in a well ventilated cupboard that is preferably child-proof

CLEANING DO’S

- Employ regular routine cleaning rather than an occasional aggressive single cleaning.
- Only use propriety brands of cleaners that state “SUITABLE FOR STAINLESS STEEL”, such as Inox Creme
- Always rinse and dry as the final step in a cleaning procedure.

CLEANING DON'TS

- Do not use coarse abrasive powders.
- Do not use metallic scourers or brushes with metal bristles.
- Do not use the so termed “silver cleaners”.
- Do not use acids (except nitric acid in specific instances).





Warranty claims are subject to the following conditions:

- 1.0 The product has been used in an application that is suitable for the design and correct specification.
- 2.0 The product has been maintained and not damaged through the use of unsuitable chemicals and /or abrasive materials.
- 3.0 The products has not been exposed to unsuitable chemicals which could affect the material. These chemicals include but not limited to chlorine, household bleach, certain acid containing cleaners and exposure to salt water conditions.
Do not store cleaning material under the kitchen sink.
(Refer to Cleaning and maintenance of Stainless Steel on the website www.franke.co.za).
- 4.0 Installation was done by a competent electrician or plumber and that the installation is in accordance with the instruction manual supplied with the product.
- 5.0 The product has not been tampered with or modified.
- 6.0 Fair wear and tear excluded.

Residential Sinks and Accessories:

- Fraganite Sinks - 5 year warranty
- Stainless Steel Domestic Kitchen Sinks - 25 years against corrosion from date of purchase (except SA94 sink for low cost housing).
- Stainless Steel SA94 Sink - 24 months against manufacturing defects.
- Accessories (Waste Fittings, Cutting boards, Baskets etc) - 12 months against manufacturing defects.
- Waste Disposers - 12 months against manufacturing defects.
- Kitchen Sink Mixers: Body - 10 years against manufacturing defects; Cartridge - 24 months against manufacturing defects.
- Economy Wash Trough and Economy Preparation Bowls - 12 months against manufacturing defects.



JOHANNESBURG

Boksburg. 011 255 1060. Corner Jan Smuts and Loizides Avenue, Barden
Bryanston. 011 510 9002. Corner William Nicol Drive and Peter Place
Pretoria. 012 348 8700. 38 Palala Road, Ashlea Gardens
The Glen. Johannesburg South. 011 027 7900. 6 Skukusa Road
North Riding. 011 704 1104. Cnr Malibongwe & Witkoppen
Waterfall. Cnr Bridal Veil Rd & R101, Jukskei View

CAPETOWN

Northgate Estate Brooklyn. 021 510 7766. Gold Street.
Somerset West. 021 851 2170. Corner N2 and R44, Next To Somerset Mall

DURBAN

Umhlanga. 031 566 5069. 7 Tetford Crescent, Umhlanga Ridge,

MPUMALANGA

Nelspruit. 013 757 0218. Oewer Street, Riverside

LIMPOPO

Polokwane. 015 690 0996. 7 Marlothii Str Baobab Gardens, Munnik

BOTSWANA

Gaborone. +267 315 8033. Plot 77806, Block 10 A1 Road, Setlhoa.

ITALTILE

COMMERCIAL

For more information visit our website at www.italtile.co.za